

# SECTION IV

## Photography Division

### GENERAL GUIDELINES

#### TYPES OF ENTRIES

There are two classifications: Color and Monochromatic (black and white, sepia, and grayscale). Contestants may enter any of the classifications in the following categories.

Note: Monochromatic (black and white, sepia, and grayscale) Plants and Animals is a combined event, whereas Color Plants and Color Animals are two separate events. **Contestants may use any camera for all categories.**

1. Scenic—A picturesque outdoor setting (no people, humans, or animals).
2. Still Life—A picturesque indoor arrangement of objects (indoor setting).
3. Animals—A picture of living animals, birds, insects, etc., taken in their natural or unnatural habitat (zoo pictures permitted).
4. Plants—A picture of living flowers or plants taken in their natural or unnatural habitat (botanical gardens are permitted).
5. Special Effects—**(color only)** TRICK PHOTOGRAPHY using objects, lighting, lenses, or other equipment to create an illusion or unusual effect. **Include a detailed description on the Photography Report (CF37) of how you created your special effect.** Computer software (Adobe® Photoshop®, Adobe® Illustrator®, CorelDRAW®, etc.) may not be used.
6. Character Trait Picture—A picture that portrays one of the ninety character traits listed below. **The Character Trait must be listed on the 3" x 5" card attached to your entry. Character Trait pictures may include people, animals, scenery, objects, or nonliving things.**

Affectionate	Confident	Deferent	Faithful	Gracious
Appreciative	Considerate	Dependable	Fearless	Grateful
Attentive	Consistent	Determined	Flexible	Happy
Available	Content	Diligent	Forgiving	Holy
Blessed	Cooperative	Discerning	Friendly	Honest
Cheerful	Courageous	Discreet	Generous	Humble
Committed	Courteous	Efficient	Gentle	Integrity
Compassionate	Creative	Equitable	Godly	Joyful
Concerned	Decisive	Fair	Goodly	Just

Kind	Observant	Prudent	Reverent	Thorough
Knowledgeable	Optimistic	Punctual	Righteous	Thrifty
Longsuffering	Orderly	Pure	Secure	Tolerant
Loving	Patient	Purposeful	Self-Controlled	Trustworthy
Loyal	Peaceful	Ready	Sincere	Truthful
Meek	Perseverant	Rejoiceful	Steadfast	Understanding
Merciful	Persuasive	Resourceful	Submissive	Virtuous
Modest	Prayerful	Respectful	Tactful	Wise
Obedient	Prepared	Responsible	Temperate	Zealous

7. Computer Photo Enhancement (Color Only)—a photographic image (picture) taken with a film or digital camera and enhanced with computer software programs (such as Adobe® Photoshop®, Adobe® Illustrator®, or CorelDRAW®). Anything may be done to enhance the photographic image as long as it meets A.C.E. guidelines.

## COLOR AND MONOCHROMATIC RULES

1. Entries must have been taken after the completion of the previous International Student Convention and must not have been entered in any other contest.
2. Entries must be the sole work of the student.
3. Entries should be approximately 8" x 10" mounted with a mat approximately 11" x 14" (no frames).
4. Entries must arrive for judging in satisfactory exhibition condition.
5. A.C.E. is not responsible for entries lost or damaged.
6. Subjects in entries **MUST conform** to A.C.E. Student Convention dress standards.
7. Each photo may be entered in **only one event**.
8. Students may use any camera for all entries.

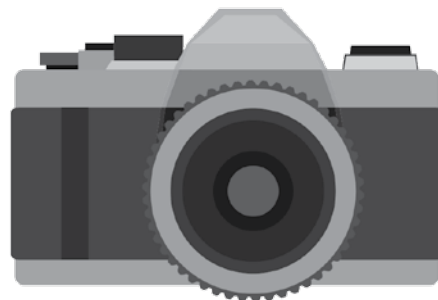
Computer software (such as Adobe® Photoshop®, Adobe® Illustrator®, or CorelDRAW®) may be used for red eye, cropping, rotating, color balance and tonal adjustment (lightness, darkness, and contrast—not enhancement), and printing only. No other enhancement allowed in these categories.

## COMPUTER PHOTO ENHANCEMENT ADDITIONAL RULES

1. Computer Photo Enhancement is a photographic image (picture) taken with a film or digital camera and enhanced with computer software programs (Adobe Photoshop or Illustrator, Corel Draw, or other image enhancing programs). Anything may be done to enhance the photographic image as long as it meets A.C.E. guidelines.
2. All photographs used as background or added materials must be taken by the student.
3. Objects may be added or deleted from the image (picture). For example, an object may be removed and added to a new environment, or objects can be added to create a new environment. Text may be added to make a poster, church bulletin, greeting card, etc.
4. The student must attach the original photographic image (picture) on the back of the enhanced photo for comparison purposes.

### Checklist for Photography:

1. For Regional Convention and International Convention:
  - a. Each entry must be labeled with a **3" x 5" card** securely attached to the back of the mat with the following information: entry (Character Trait portrayed if entering Character Trait picture), student's name, school name, customer number, school address, city, state, ZIP/Postal Code.
  - b. Photography Report (CF37) is only required for Special Effects (securely attached to the back of the entry).
2. For **Regional Convention ONLY**: Judge's Forms (CF38)—Three (3) copies with name, school, customer number, address, and entry.



**Note to Sponsor:** Be sure the contestant enters the correct category. Review the Judge's Forms to see where points are given and make sure that the entry includes each point.

### CRITERIA

**Meets A.C.E. Guidelines**—The subject matter or topic treated must conform to A.C.E. standards of what is acceptable in behavior, dress, etc.

**Composition**—The visual process of organizing the elements and individual details of a scene into a balanced and pleasing arrangement.

**Mounting**—The color, texture, and permanence of the material on which the photograph is exhibited.

### HINTS FROM THE PHOTOGRAPHY JUDGES

Judges will pay close attention to the technical qualities of your work. Next to content comes composition. This includes the number of subjects, their arrangements, and the background of the picture. When composing, keep your photography simple. Too much symbolism or clutter is distracting to the viewer. Avoid placing the main subject "dead center." This produces a dull, static effect, which is not very pleasing to the eye. After composing the photo, carefully check the background for distracting, objectionable elements. Many fine shots have been ruined by ugly telephone wires or distracting blotches of color that detract from the main subject. Nothing in the photo, even though in the background and out of focus, should violate the A.C.E. standard of dress, behavior, etc. Finally, pay close attention to the finishing touches. Your photo should be clean and free of scratches, dust specks, or wrinkles, and should be matted attractively. Often these are the factors that are used to break ties.

# PHOTOGRAPHY JUDGING CRITERIA

## Areas of Evaluation

## POSSIBLE POINTS

### IMPACT

Uniqueness – Selection of subject shows creative effort	(1-5)
Perspective – Angle and distance between camera and subject is ideal	(1-5)
Intensity – Immediately captures the viewer’s attention	(1-5)
Resonance – Evokes an emotional response	(1-5)
Memorability – Creates a lasting impression	(1-5)

### COMPOSITION

Positioning – Subject location(s) within the composition is pleasing and balanced	(1-5)
Isolation – Subject is obvious within its setting (breadth and depth)	(1-5)
Insulation – Subject is captured in a manner that eliminates distractions	(1-5)
Orientation – Choice of portrait or landscape format is ideal	(1-5)
Difficulty – Capturing this image required extra physical effort	(1-5)

### EXPOSURE

Focus – The focal point and depth of field capture the entire subject	(1-5)
Brightness – Whites are not “blown away” and darks are not without definition	(1-5)
Contrast – Full dynamic spectrum ranging from highlights to shadows	(1-5)
Clarity – Strong resolution free from noise, pixilation, artifacts, and dust spots	(1-5)
Color – Correct white balance with good saturation and appropriate vibrancy	(1-5)

### PRESENTATION

Color – Choice of mount enhances image rather than detracting from it	(1-5)
Texture – Print paper choice and mount texture complement the composition	(1-4)
Quality – Print and mount are flat and well adhered to one another	(1-4)
Condition – Print and mount are free of scratches, stains, and scuffs	(1-4)
Conformity – Subject matter conforms to A.C.E. Guidelines	(1-5)

### PROPER DOCUMENTATION SUBMITTED

(1-3)

**TOTAL POINTS (100)**

# PHOTOGRAPHY JUDGING CRITERIA (CHARACTER TRAIT)

Areas of Evaluation

POSSIBLE POINTS

## IMPACT

Uniqueness – Selection of subject shows creative effort	(1-4)
Perspective – Angle and distance between camera and subject is ideal	(1-4)
Intensity – Immediately captures the viewer’s attention	(1-4)
Resonance – Evokes an emotional response	(1-4)
Memorability – Creates a lasting impression	(1-4)

## COMPOSITION

Positioning – Subject location(s) within the composition is pleasing and balanced	(1-5)
Isolation – Subject is obvious within its setting (breadth and depth)	(1-5)
Insulation – Subject is captured in a manner that eliminates distractions	(1-5)
Orientation – Choice of portrait or landscape format is ideal	(1-5)
Difficulty – Capturing this image required extra physical effort	(1-5)

## EXPOSURE

Focus – The focal point and depth of field capture the entire subject	(1-5)
Brightness – Whites are not “blown away” and darks are not without definition	(1-5)
Contrast – Full dynamic spectrum ranging from highlights to shadows	(1-5)
Clarity – Strong resolution free from noise, pixilation, artifacts, and dust spots	(1-5)
Color – Correct white balance with good saturation and appropriate vibrancy	(1-5)

## PRESENTATION

Color – Choice of mount enhances image rather than detracting from it	(1-5)
Texture – Print paper choice and mount texture complement the composition	(1-4)
Quality – Print and mount are flat and well adhered to one another	(1-4)
Condition – Print and mount are free of scratches, stains, and scuffs	(1-4)
Conformity – Subject matter conforms to A.C.E. Guidelines	(1-5)
Clarity – How obvious is the chosen trait	(1-5)

## PROPER DOCUMENTATION SUBMITTED

(1-3)

**TOTAL POINTS (100)**

# PHOTOGRAPHY JUDGING CRITERIA (COMPUTER ENHANCEMENT)

Areas of Evaluation	POSSIBLE POINTS
<b>IMPACT</b>	
Uniqueness – Selection of subject shows creative effort	(1-4)
Perspective – Angle and distance between camera and subject is ideal	(1-4)
Intensity – Immediately captures the viewer’s attention	(1-4)
Resonance – Evokes an emotional response	(1-4)
Memorability – Creates a lasting impression	(1-4)
<b>COMPOSITION</b>	
Positioning – Subject location(s) within the composition is pleasing and balanced	(1-5)
Isolation – Subject is obvious within its setting (breadth and depth)	(1-5)
Insulation – Subject is captured in a manner that eliminates distractions	(1-5)
Orientation – Choice of portrait or landscape format is ideal	(1-5)
Difficulty – Capturing this image required extra physical effort	(1-5)
<b>EXPOSURE</b>	
Focus – The focal point and depth of field capture the entire subject	(1-5)
Brightness – Whites are not “blown away” and darks are not without definition	(1-4)
Contrast – Full dynamic spectrum ranging from highlights to shadows	(1-4)
Clarity – Strong resolution free from noise, pixilation, artifacts, and dust spots	(1-4)
Color – Correct white balance with good saturation and appropriate vibrancy	(1-4)
<b>PRESENTATION</b>	
Color – Choice of mount enhances image rather than detracting from it	(1-4)
Texture – Print paper choice and mount texture complement the composition	(1-4)
Quality – Print and mount are flat and well adhered to one another	(1-4)
Condition – Print and mount are free of scratches, stains, and scuffs	(1-4)
Conformity – Subject matter conforms to A.C.E. Guidelines	(1-4)
<b>PHOTO ENHANCEMENT</b>	
Difficulty – How hard was it to achieve the end result	(1-5)
Execution – How well were the enhancements done	(1-5)
<b>PROPER DOCUMENTATION SUBMITTED</b>	(1-4)
<b>TOTAL POINTS</b>	<b>(100)</b>